



JUBILEE CAPITAL CAMPAIGN

Honoring our Vision — Creating our Future



OUR VISION FOR THE FUTURE

The mission of our Jubilee Capital Campaign is to honor the vision of our founders and those who have worked and worshiped at Transfiguration for the past 50 years — a vision for worship and music; for ministry and education; and for outreach.

It is time to come together to celebrate God's blessings and do all we can to turn our vision into a reality.

Building Plans

When the existing church was built in 1970, it was conceived that all parish ministries be housed together in one connected facility at the top of the hill. With a usable floor space of approximately 35,000 square feet, the new two-story south building will finally achieve this goal. The architects are Good, Fulton and Farrell, the same architects used for the Parish Life Center and several other buildings on our property. Because of grade restrictions, the first floor will be slightly lower than the level of the labyrinth with access to it via both a ramp and stairs. The second level will be accessible via several stairwells including one "grand" staircase and by an elevator.

The building will attach to our existing building at three points. The window wall and doors on the south side of the Gathering Space and labyrinth area will be removed to allow primary access to the new facility through that portal. Access will also be through the south transept which will open on to a new west entrance plaza. The third access point will be from the south side of the choir gallery. This will allow musicians to move directly from the rehearsal hall to the gallery, and easily transfer handbells, handbell tables, pianos and other instruments without conflicting with the flow of worshippers in and out of the nave. The main floor level will also connect, via covered walkway, with Building B. The nave will remain as the visual center and high-point of the completed structure, just as it is the center of our life in Christ.

"We must provide the necessary physical facilities to accommodate the growing needs of our parish and to attract new members."
— a parishioner from the 2005 survey

First Floor

Includes a chapel, new and expanded sacristy, a reception area, offices for the rector, clergy and staff, a large and small conference room, a kitchenette, a theatre/multipurpose space, storage, a new parlor (the current parlor will become the Kay Andrews Bookstore), a courtyard and an elevator to the second floor.

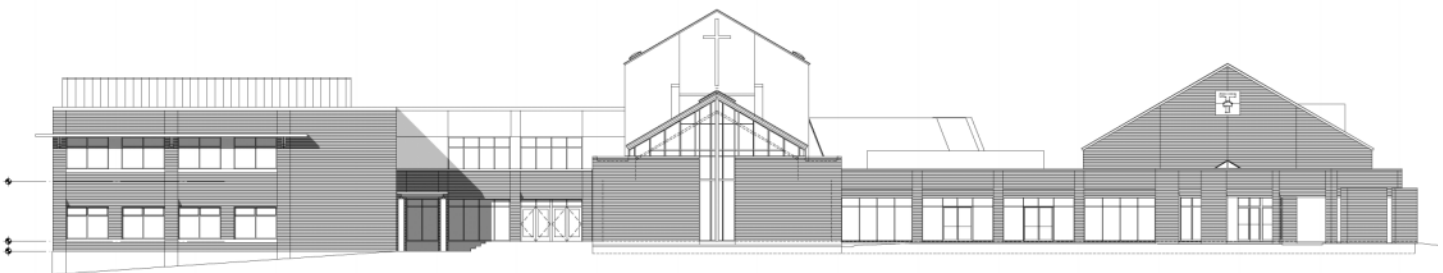
Second Floor

Includes classrooms for adult Christian Education, a kitchenette, music rehearsal rooms, offices for music directors, a music library/secretary, a choir vesting area and audio/visual storage space.

Renovation of Existing Parish Offices – Building for our Children’s Ministry

Currently, our children’s Christian Education classes share space with Parish Episcopal School classes. While a long-term amicable relationship for use of these spaces exists, it is not possible for our children to decorate their Sunday School rooms or leave supplies and arts/craft projects posted on the walls.

Once the new South Building is completed, Building B, the current Parish Offices building, will be remodeled to give our youngest members their own welcoming and hospitable space when they come on Sundays. These rooms will also allow us to provide additional weekday Christian Education programs specifically designed with our children and families in mind.



BUILDING ELEVATION: EAST
SCALE 1/8"=1'-0"

Endowment for Outreach

Since the early 1980s, Transfiguration has become more and more intentional about the gospel's call to respond to human needs and to strive for a more just society for all the holy people of God. Outreach at Transfiguration has become multidimensional. This past year we all pulled together to support Voice of Hope Ministries. Individuals as well as parish groups worked together to support this life-giving agency's mission to make a difference in the lives of children and families of West Dallas. Last fall we partnered with other churches to sponsor another Habitat for Humanity house. As a result of this effort, the Law family now lives in their own home. When families were devastated by the hurricanes of late last summer, Transfiguration rose to the occasion by addressing immediate needs through the collection of supplies and the volunteering of time. Long-term needs were addressed through family and parish sponsorship. Our Honduras Mission work continued this year with our fourth trip to La Ceiba, Honduras. As Transfiguration moves into its next fifty years, our Outreach needs to reflect our maturity — addressing both immediate needs and root causes, and integrating financial, relational and justice dimensions of work in a variety of settings. Our goal is to use 10 percent of the total Capital Campaign to create an Endowment for Outreach which will be administered through the existing Transfiguration Endowment Fund.

An Endowment for Outreach will:

- Provide annual income that can be directed to emergency needs in our city and the larger community.
- Enable increased and continuing large-scale projects such as Habitat for Humanity, Honduras and other mission projects without having to request individual donations.
- Assure that there will always be a readily available source of funding.

"Your visit gave us the spiritual nutrition we all longed for — not only through the Christian Education program but through the love and hope you offered in your smiles, hugs, assurance, peace, and in the unity in your group."

*— Veronica,
Rector of Holy
Trinity Church,
La Ceiba,
Honduras*



Ministries and programs we currently support

AIDS Outreach Ministry
Austin Street Centre
CITY House
Clothes Horse
Court Appointed Special Advocates for Children
Dallas Area Interfaith
Habitat for Humanity
Happy Homes
Heart Warmers
Hearts and Helpers
Honduras Mission Trip
Hope's Door Women's Shelter
Interfaith Environmental Alliance
Neighborhood Services Council
North Dallas Shared Ministries
Open Door Preschool
Our Friend's Place
R.O.S.E.S. (Reach Out-Serve Elderly Shut-Ins)
St. Simon's Afterschool Program
Voice of Hope
Wilkinson Center
Youth First Texas



The Organ

The vision of a great organ to complement the church's sacred art and enliven its worship has been in the hearts of the people for over 40 years. At the time of construction, funds were not available for the anticipated instrument of more than 3,000 pipes.

The current organ was built in 1971 in the last days of the Aeolian-Skinner Company. While this organ of 13 stops has served us well over the years, it has limitations. It offers only a hint of the majestic sound that could complement the liturgical experience of the planned Opus 17 organ.

After careful evaluation of 10 select organ builders, the Organ Search Committee selected a builder of "notable" instruments, Richards, Fowkes & Co, of Ooltewah, Tennessee. The company will employ time-honored architectural principles in the custom design of our organ to enhance our space and worship. Modifications to the gallery and acoustics of the nave will be made to provide the best benefit to all our choirs. Construction is slated to begin in January 2007 with delivery in mid 2008.



Organ photo represents the quality craftsmanship of Richards, Fowkes & Co., but does not reflect our specific design.

Ministry Benefits

Regardless of age, everyone's worship and educational experience will be enhanced by the following planned improvements:

- The power and beauty of the new pipe organ will raise our spirits, lift our minds and hearts, console our grief, and inspire our lives in Christ's Name.
- The South Building will accommodate current and future church growth.
- More concurrent events can now be held in our expanded facility.
- We will no longer need to turn away requests for use of our space from parish and community organizations because of overcrowding.
- The quality of our Sunday School programs and participation will be improved by convenient, adequate space for Children's Ministries.
- Fellowship, small group activities, and other events will be promoted with the new facilities.
- The two-story plan, with its elevator, enables the building to be tied in to the nave, making our education and choir areas accessible to those with impaired mobility.
- Music ministries will be enriched as a result of centralized resources and proper storage.
- An expanded sacristy will allow our exquisite vestment collection, processional crosses, and other symbols of our faith and worship to be properly stored.
- An expanded sacristy will also provide adequate space for our Altar Guild ministry.
- The Endowment for Outreach will enable increased outreach efforts in our community and in other mission projects.
- Our ability to respond quickly to emergency or unplanned human needs will be assured.

"The organ is a basic need. It will enhance the quality of our music program which will in turn attract more people to the church." – a parishioner from the 2005 survey

The Episcopal Church of the Transfiguration

14115 Hillcrest Rd • Dallas, Texas 75254-8622 • www.transfiguration.net • Office 972-233-1898 • Fax 972-233-7095